



SIGNATURE & PREMIERE SERIES | 60 mm

UNITS

**12 x 24**

11.81 x 23.62 x 2.36 in
 300 x 600 x 60 mm
 Units/bundle: 54
 Units/layer: 6

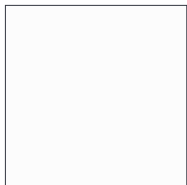
BUNDLE SPECIFICATIONS

	IMPERIAL	METRIC
Coverage	104.6 ft ²	9.72 m ²
Weight	3012 lbs	1366.2 kg
Layers	9	
Coverage per layer	11.62 ft ²	1.08 m ²
Lineal coverage	53.15 / 106.29 ft	16.2 / 32.4 m
Lineal coverage per layer	5.91 / 11.81 ft	1.8 / 3.6 m

**12 x 36**

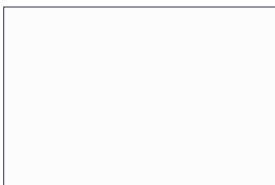
11.81 x 35.4 x 2.36 in
 300 x 900 x 60 mm
 Units/bundle: 27
 Units/layer: 3

	IMPERIAL	METRIC
Coverage	78.45 ft ²	7.29 m ²
Weight	2256 lbs	1023.3 kg
Layers	9	
Coverage per layer	8.71 ft ²	0.81 m ²
Lineal coverage	26.57 / 79.72 ft	8.1 / 24.3 m
Lineal coverage per layer	2.95 / 8.86 ft	0.9 / 2.7 m

**24 x 24**

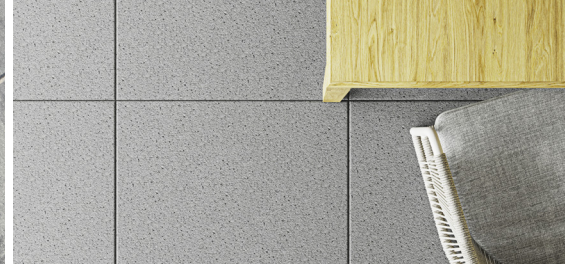
23.62 x 23.62 x 2.36 in
 600 x 600 x 60 mm
 Units/bundle: 18
 Units/layer: 2

	IMPERIAL	METRIC
Coverage	69.7 ft ²	6.47 m ²
Weight	1956 lbs	887.2 kg
Layers	9	
Coverage per layer	7.75 ft ²	0.72 m ²
Lineal coverage	35.43 ft	10.8 m
Lineal coverage per layer	3.94 ft	1.2 m

**24 x 36**

23.62 x 35.43 x 2.36 in
 600 x 900 x 60 mm
 Units/bundle: 18
 Units/layer: 2

	IMPERIAL	METRIC
Coverage	104.6 ft ²	9.72 m ²
Weight	2992 lbs	1357 kg
Layers	9	
Coverage per layer	11.62 ft ²	1.08 m ²
Lineal coverage	53.15 / 106.3 ft	16.2 / 32.4 m
Lineal coverage per layer	5.9 / 11.81 ft	1.8 / 3.6 m



BUNDLE OVERVIEW



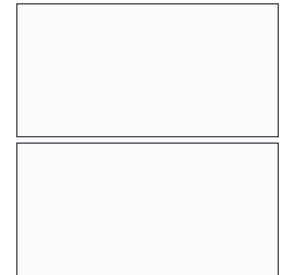
12 x 24



24 x 24

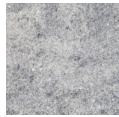


12 x 36



24 x 36

SIGNATURE COLOURS



Carrara



Colorado Grey



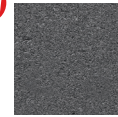
Glacier Creek



Pearl



Sandstone Taupe



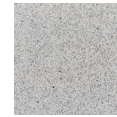
Ultra Black

Ultra Black available in 12 x 24 & 24 x 24.

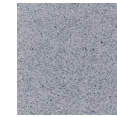
PREMIERE COLOURS



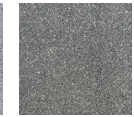
Brightsand



Eclipse



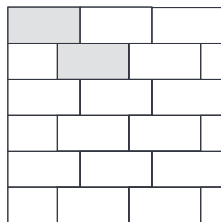
Silverlight



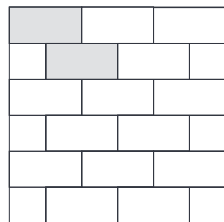
Storm

Premiere colours available in 12x24 and 24x24. All other sizes are special order.

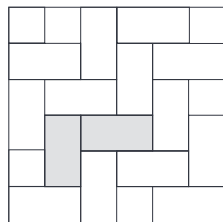
PATTERNS



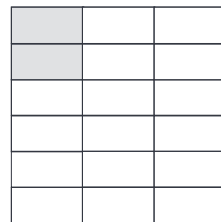
3/4 Off-Set
(Best Practice)



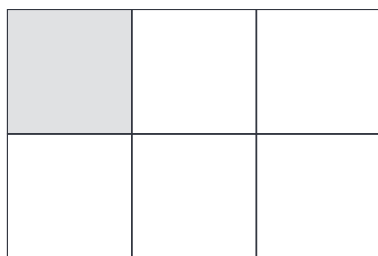
1/2 Off-Set



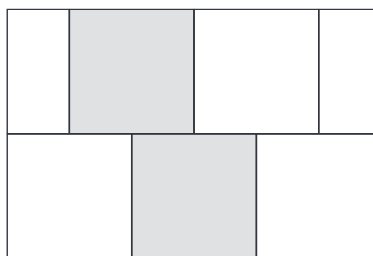
Herringbone



Tile Joint



Tile Joint



1/2 Off-Set

NOTES

For pedestrian use only. Largeformat slabs with a soft touch surface. Provides a contemporary finish that DesignLoc® technology allows for a highly refined surface, with integral colouring.

When installing slabs on pedestal set, ensure to consider load requirements. Refer to a project engineer for specific considerations.

Plate tamper not recommended.