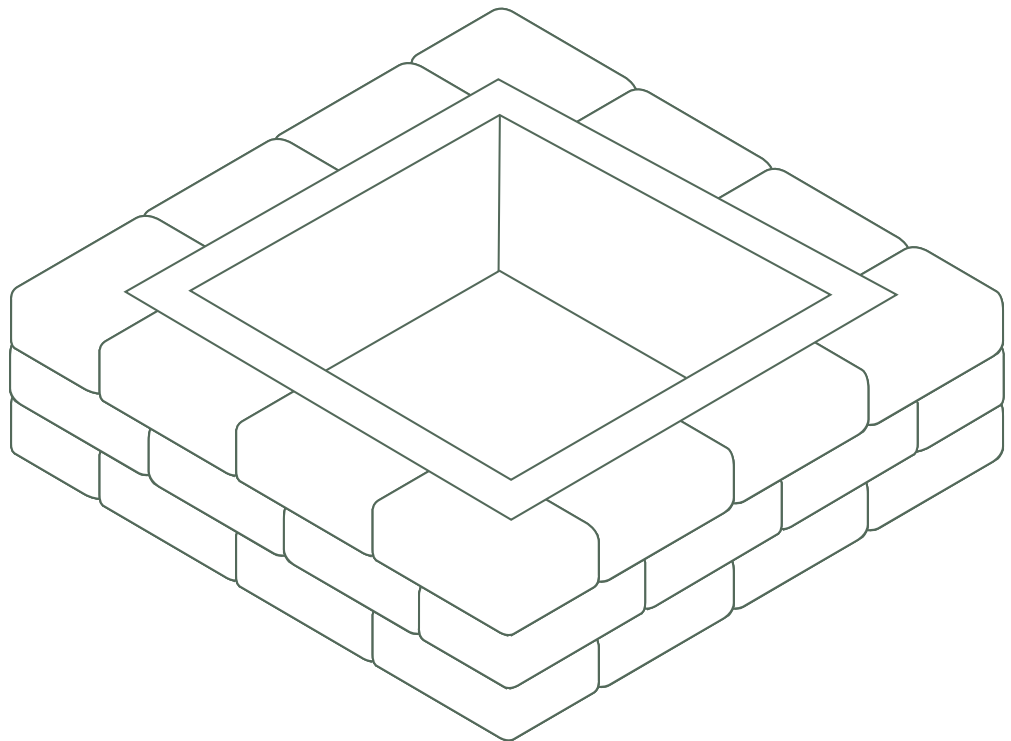




# Antico Fire Pit

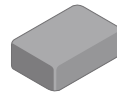
---



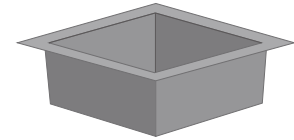
**This kit measures approximately  
43" w x 43" d x 12" h**

### MATERIALS INCLUDED:

12" x 8" Antico Stackers – 36  
Steel Insert  
Gloves  
Instruction Guide



12" x 8"  
Antico Stacker



28" x 28" x 12"  
Steel Insert

### OTHER ITEMS NEEDED:

Measuring Tape/Ruler  
Level

## Base Preparation

**If installing your Best Way Stone Antico Fire Pit on an unstructured base, please ensure to follow these steps:**

- Mark out the location for your fire pit. Excavate area approx. 5" below grade.
- Excavate approx. 6" larger than your actual kit dimensions to ensure a stable base.

- Fill 4" with  $\frac{3}{4}$ " limestone and compact.
- Level out 1" of sand and install kit as per the instruction guide.

**If you are installing on a solid base such as an existing patio, base prep is not necessary. Please proceed to the first step.**

**Note:** This manual was updated May, 2021.

For more information visit [www.bestwaystone.com/outdoorelements](http://www.bestwaystone.com/outdoorelements)

## Read Prior to Installation

### Important:

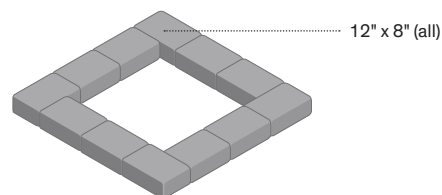
1. The consumer is responsible for reviewing the local regulations pertaining to the installation and use of this product. Please confirm that use of this product is in compliance with the by-laws, regulations, building codes and laws of your jurisdiction before using.
2. Make sure that you locate your respective gas lines, wires, water pipes, and/or any above ground and underground services in your area and install your Antico Stacker Fire Pit in the proper distance away from them. Check with your provider for location and distance requirements prior to installation.
3. Check with your insurance provider concerning the installation, use, value implications and/or any other considerations in regard to your Antico Stacker Fire Pit.
4. Fire pit is not suitable for large fires. Fire size should not allow flame to contact the top layer. Fire pit should not be placed directly on concrete products as high heat can adversely affect the integrity of the product.

### Step 1

- A** On your selected location, lay out the first layer using pattern A.
- B** Ensure that this layer is level to allow for a proper installation.

**USE:**

12" x 8" Antico Stacker blocks – 12

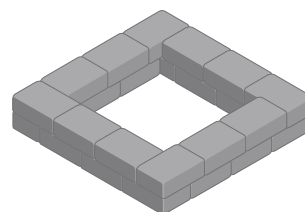


### Step 2

- A** The second layer uses pattern B, which is offset from the previous pattern.

**USE:**

12" x 8" Antico Stacker blocks – 12



### Step 3

- A** Repeat the pattern from Step 1 as shown in the diagram.
- B** Install steel insert in centre of fire pit.

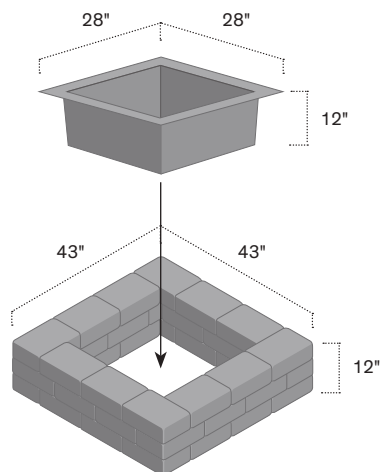
**USE:**

12" x 8" Antico (Grey Mix) blocks – 12

28" x 28" x 12" Steel Insert – 1

**NOTE:**

The steel insert retains heat long after use. Ensure it is cool before touching.





1-800-bestway (237-8929)  
bestwaystone.com


**Woodbridge (Head Office)**

8821 Weston Road  
Woodbridge, ON L4L 0K9  
T 905-851-5122  
F 905-851-7603


**Uxbridge**


65 Anderson Boulevard  
Uxbridge, ON L9P 0C7  
T 905-640-5845  
F 905-640-9773

 facebook/bestwaystone

 @bestwaystone

 pinterest/bestwaystone

 houzz/bestwaystone

 @bestwaystone