

# HAZELTON™

CLASSIC SERIES | DOUBLE-SIDED TEXTURED WALL



## UNITS



### BLOCK

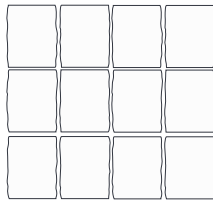
11.81w x 4.92h x 8.85d in  
300w x 125h x 225d mm  
Units/bundle: 60

### CORNER

12.8w x 4.92h x 6.9d in  
325w x 125h x 175d mm  
Units/bundle: 48

## BUNDLE OVERVIEW

### Block



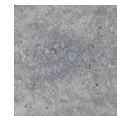
### Corner



## COLOURS



Beige Mix



Grey Mix



Ultra Black

## BUNDLE SPECIFICATIONS

Blocks	IMPERIAL	METRIC
Coverage	24.21 ft <sup>2</sup>	2.25 m <sup>2</sup>
Lineal coverage	59.05 ft	18 m
Weight	2296 lbs	1041.5 kg
Weight per unit	38.3 lbs	17.4 kg
Coverage per unit	0.404 ft <sup>2</sup>	0.038 m <sup>2</sup>
Lineal coverage per unit	0.984 ft	0.3 m

Corner	IMPERIAL	METRIC
Coverage	11.3 / 21 ft <sup>2</sup>	1.05 / 1.95 m <sup>2</sup>
Lineal coverage	27.6 / 51.2 ft	8.4 / 15.6 m
Weight	1642 lbs	744 kg
Weight per unit	34.2 lbs	15.5 kg
Coverage per unit	0.23 / 0.44 ft <sup>2</sup>	0.02 / 0.04 m <sup>2</sup>
Lineal coverage per unit	0.57 / 1.06 ft	0.17 / 0.32 m

## NOTES

A double-sided textured wall with a locking system that allows for vertical or set-back designs.

The corner creates a 20" x 20" column.

Block and corner units are sold separately. Arlington™, Montana™, or Garden Lock™ coping are ideal to complete Hazelton™ wall.

Maximum height with set-back: 36"  
Maximum height without set-back: 24"

## TYPICAL CROSS SECTIONS

