

# STACKER

CLASSIC SERIES | CLASSIC SMOOTH & TUMBLED FINISH WALL



## UNITS



### ANTICO®

11.81w x 3.92h x 7.87d in  
300w x 100h x 200d mm  
Units/bundle: 96

### CLASSIC SMOOTH

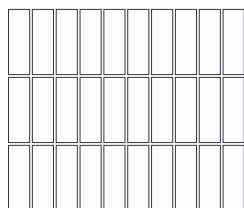
11.81w x 3.92h x 7.87d in  
300w x 100h x 200d mm  
Units/bundle: 90

## BUNDLE OVERVIEW

### Antico®



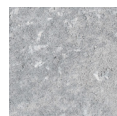
### Classic Smooth



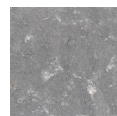
## ANTICO COLOURS



Beige Mix



Grey Mix



Ultra Black

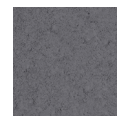
## CLASSIC SMOOTH COLOURS



Beige Mix



Grey Mix



Ultra Black

## BUNDLE SPECIFICATIONS

### Antico®

	IMPERIAL	METRIC
Coverage	20.67 / 31 ft <sup>2</sup>	1.92 / 2.88 m <sup>2</sup>
Lineal coverage	63 / 94.5 ft	19.2 / 28.8 m
Weight	2861 lbs	1297.6 kg
Weight per unit	29.8 lbs	13.5 kg
Coverage per unit	0.21 / 0.32 ft <sup>2</sup>	0.02 / 0.03 m <sup>2</sup>
Lineal coverage per unit	0.66 / 0.98 ft	0.2 / 0.3 m
Sections	4	-
Coverage per section	5.17 / 7.75 ft <sup>2</sup>	0.48 / 0.72 m <sup>2</sup>
Lineal coverage per section	15.75 / 23.62 ft	4.8 / 7.2 m

### Classic Smooth

	IMPERIAL	METRIC
Coverage	19.28 / 28.93 ft <sup>2</sup>	1.8 / 2.7 m <sup>2</sup>
Lineal coverage	59.02 / 88.58 ft	18 / 27 m
Weight	2682 lbs	1216.5 kg
Weight per unit	29.8 lbs	13.5 kg
Coverage per unit	0.21 / 0.32 ft <sup>2</sup>	0.02 / 0.03 m <sup>2</sup>
Lineal coverage per unit	0.66 / 0.98 ft	0.2 / 0.3 m
Layers	3	-
Coverage per layer	6.43 / 9.64 ft <sup>2</sup>	0.6 / 0.9 m <sup>2</sup>
Lineal coverage per layer	19.67 / 29.53 ft	6 / 9 m

## NOTES

Stacker is a versatile stacking block that can be applied to multiple applications such as garden walls, outdoor kitchens, columns, water and fire features.

Creates a 19.5" x 19.5" column base.

Antico® and Smooth Stacker sold and packaged separately.